

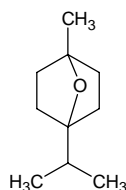
1,4-cineole

1,4-シネオール

Formula C₁₀H₁₈O

Mol. Wt. 154.25

CAS No. 470-67-7



SEQ No. 371 エーテル類

FEMA No. 3658

JECFA No. 1233

	JFFMA	JECFA	FCC
Chemical name	1,4-cineole	1,4-Cineole	
Content (NLT)	75.0 % (GC)	75 %	
Refractive index	1.447-1.457 (n _{20D})	1.449-1.456 (n _{20D})	
Specific gravity	0.880-0.905 (d _{20/20})	0.898-0.902 (d _{25/25})	
Acid value (NMT)		1	
Melting/Congeealing point			
Angular/Specific rotation			
Heavy metals (NMT)			
Solubility in ethanol		soluble	
Other requirements	SC: 1,8-cineole(5-10%), limonene, alpha-terpinene, gamma-terpinene, myrcene, alpha- phellandrene, p-cymene, camphene	SC: 1,8-cineole	
Identification*	IR : MS :4,5 NMR :1	NMR	

*References

- 1: Joint FAO/WHO Expert Committee on Food Additive (JECFA)
- 2: Food Chemicals Codex (FCC)
- 3: 有機化合物のスペクトルデータベース SDBS(独立行政法人産業技術総合研究所)
- 4: Wiley's Registry of Mass spectral Database
- 5: NIST/EPA/NIH Mass Spectral Library
- 6: Sigma-Aldrich