

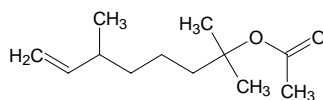
2,6-dimethyl-7-octen-2-yl acetate

2,6-ジメチル-7-オクテン-2-イル アセテート

Formula C₁₂H₂₂O₂

Mol. Wt. 198.30

CAS No. 53767-93-4



SEQ No. 2628 エステル類

FEMA No.

JECFA No.

| | JFFMA | JECFA | FCC |
|---------------------------|-----------------------------------|-------|-----|
| Chemical name | 2,6-dimethyl-7-octen-2-yl acetate | | |
| Content (NLT) | 97.0 % (GC) | | |
| Refractive index | 1.427-1.435 (n _{20D}) | | |
| Specific gravity | 0.870-0.880 (d ₂₀ /20) | | |
| Acid value (NMT) | 1.0 | | |
| Melting/Congeealing point | | | |
| Angular/Specific rotation | | | |
| Heavy metals (NMT) | | | |
| Solubility in ethanol | | | |
| Other requirements | | | |
| Identification* | IR :5 | | |
| | MS :5 | | |
| | NMR : | | |

*References

- 1: Joint FAO/WHO Expert Committee on Food Additive (JECFA)
- 2: Food Chemicals Codex (FCC)
- 3: 有機化合物のスペクトルデータベース SDBS(独立行政法人産業技術総合研究所)
- 4: Wiley's Registry of Mass spectral Database
- 5: NIST/EPA/NIH Mass Spectral Library
- 6: Sigma-Aldrich