

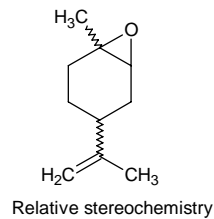
d-8-p-menthene-1,2-epoxide

d-8-p-メントエン-1,2-エポキシド

Formula C₁₀H₁₆O

Mol. Wt. 152.23

CAS No. 1195-92-2



SEQ No. 1468 エーテル類

FEMA No. 4655

JECFA No.

	JFFMA	JECFA	FCC
Chemical name	d-8-p-menthene-1,2-epoxide		
Content (NLT)	97.0 % (GC)		
Refractive index	1.464-1.474 (n _{20D})		
Specific gravity	0.926-0.936 (d ₂₀ /20)		
Acid value (NMT)			
Melting/Congeealing point			
Angular/Specific rotation	AR: 65 to 80° (α _{20D})		
Heavy metals (NMT)			
Solubility in ethanol			
Other requirements			
Identification*	IR :3		
	MS :3,4,5		
	NMR :		

*References

- 1: Joint FAO/WHO Expert Committee on Food Additive (JECFA)
- 2: Food Chemicals Codex (FCC)
- 3: 有機化合物のスペクトルデータベース SDBS(独立行政法人産業技術総合研究所)
- 4: Wiley's Registry of Mass spectral Database
- 5: NIST/EPA/NIH Mass Spectral Library
- 6: Sigma-Aldrich