

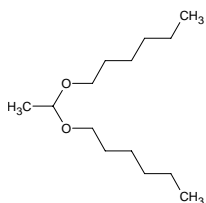
acetaldehyde dihexyl acetal

アセトアルデヒド ジヘキシル アセタール

Formula C₁₄H₃₀O₂

Mol. Wt. 230.39

CAS No. 5405-58-3



SEQ No. 19 エーテル類

FEMA No.

JECFA No.

	JFFMA	JECFA	FCC
Chemical name	acetaldehyde dihexyl acetal		
Content (NLT)	95.0 % (GC)		
Refractive index	1.418-1.428 (n _{20D})		
Specific gravity	0.834-0.844 (d _{20/20})		
Acid value (NMT)	1.0		
Melting/Congeaing point			
Angular/Specific rotation			
Heavy metals (NMT)			
Solubility in ethanol			
Other requirements			
Identification*	IR : 3		
	MS : 3,4,5		
	NMR :		

*References

- 1: Joint FAO/WHO Expert Committee on Food Additive (JECFA)
- 2: Food Chemicals Codex (FCC)
- 3: 有機化合物のスペクトルデータベース SDBS(独立行政法人産業技術総合研究所)
- 4: Wiley's Registry of Mass spectral Database
- 5: NIST/EPA/NIH Mass Spectral Library
- 6: Sigma-Aldrich