

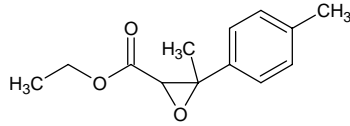
ethyl beta-methyl-beta-(4-methylphenyl)glycidate

エチル β-メチル-β-(4-メチルフェニル)グリシデート

Formula C₁₃H₁₆O₃

Mol. Wt. 220.26

CAS No. 74367-97-8



SEQ No. 854 エステル類

FEMA No. 3757

JECFA No. 1578

	JFFMA	JECFA	FCC
Chemical name	ethyl beta-methyl-beta-(4-methylphenyl)glycidate	Ethyl methyl-p-tolyglycidate	
Content (NLT)	98.0 % (Chem)	96 %	
Refractive index	1.500-1.511 (n _{20D})	1.523-1.529 (n _{20D})	
Specific gravity	1.066-1.083 (d ₂₀ /20)	1.081-1.087 (20°C)	
Acid value (NMT)	2.0	2	
Melting/Congeealing point			
Angular/Specific rotation			
Heavy metals (NMT)			
Solubility in ethanol		Soluble	
Other requirements			
Identification*	IR : MS : NMR :1	NMR	

*References

- 1: Joint FAO/WHO Expert Committee on Food Additive (JECFA)
- 2: Food Chemicals Codex (FCC)
- 3: 有機化合物のスペクトルデータベース SDBS(独立行政法人産業技術総合研究所)
- 4: Wiley's Registry of Mass spectral Database
- 5: NIST/EPA/NIH Mass Spectral Library
- 6: Sigma-Aldrich