

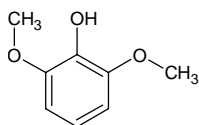
2,6-dimethoxyphenol

2,6-ジメトキシフェノール

Formula C₈H₁₀O₃

Mol. Wt. 154.16

CAS No. 91-10-1



SEQ No. 607 フェノール類

FEMA No. 3137

JECFA No. 721

	JFFMA	JECFA	FCC
Chemical name	2,6-dimethoxyphenol	2,6-Dimethoxyphenol	2,6-Dimethoxy Phenol
Content (NLT)	95.0 % (GC)	98 %	98.0 % GC(M-1b)
Refractive index			
Specific gravity			
Acid value (NMT)			
Melting/Congeeing point	MP: 52 to 56°C	MP: min. 53°C	MP: 53.0 to 56.0°C
Angular/Specific rotation			
Heavy metals (NMT)			
Solubility in ethanol		moderately soluble	1 g in 2 mL 95% ethanol
Other requirements			
Identification*	IR : 1,2,3,6 MS : 3,4,5 NMR : 3,6	IR	IR

*References

- 1: Joint FAO/WHO Expert Committee on Food Additive (JECFA)
- 2: Food Chemicals Codex (FCC)
- 3: 有機化合物のスペクトルデータベース SDBS(独立行政法人産業技術総合研究所)
- 4: Wiley's Registry of Mass spectral Database
- 5: NIST/EPA/NIH Mass Spectral Library
- 6: Sigma-Aldrich