

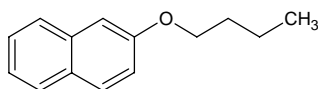
# butyl 2-naphthyl ether

## ブチル 2-ナフチル エーテル

Formula C<sub>14</sub>H<sub>16</sub>O

Mol. Wt. 200.28

CAS No. 10484-56-7



SEQ No. 1914 フェノールエーテル類

FEMA No. 4634

JECFA No.

	JFFMA	JECFA	FCC
Chemical name	butyl 2-naphthyl ether		
Content (NLT)	98.0 % (GC)		
Refractive index			
Specific gravity			
Acid value (NMT)			
Melting/Congeealing point	MP: 31 to 35°C		
Angular/Specific rotation			
Heavy metals (NMT)			
Solubility in ethanol			
Other requirements			
Identification*	IR	: 3	
	MS	: 3,4,5	
	NMR	:	

### \*References

- 1: Joint FAO/WHO Expert Committee on Food Additive (JECFA)
- 2: Food Chemicals Codex (FCC)
- 3: 有機化合物のスペクトルデータベース SDBS(独立行政法人産業技術総合研究所)
- 4: Wiley's Registry of Mass spectral Database
- 5: NIST/EPA/NIH Mass Spectral Library
- 6: Sigma-Aldrich