

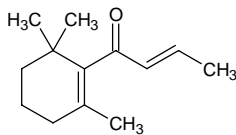
beta-damascone

β-ダマスコン

Formula C₁₃H₂₀O

Mol. Wt. 192.30

CAS No. 35044-68-9



SEQ No. 484 ケトン類

FEMA No. 3243

JECFA No. 384

	JFFMA	JECFA	FCC
Chemical name	beta-damascone	beta-Damascone	
Content (NLT)	90.0 % (GC)	90 % sum of cis and trans isomers	
Refractive index	1.493-1.503 (n _{20D})	1.496-1.501 (n _{20D})	
Specific gravity	0.933-0.943 (d _{20/20})	0.934-0.942 (20°C)	
Acid value (NMT)			
Melting/Congeealing point			
Angular/Specific rotation			
Heavy metals (NMT)			
Solubility in ethanol		1 ml in 10 ml 95%	
Other requirements		SC: alpha- and delta- damascone	
Identification*	IR :1,3 MS :3,4,5 NMR :3	IR	

*References

- 1: Joint FAO/WHO Expert Committee on Food Additive (JECFA)
- 2: Food Chemicals Codex (FCC)
- 3: 有機化合物のスペクトルデータベース SDBS(独立行政法人産業技術総合研究所)
- 4: Wiley's Registry of Mass spectral Database
- 5: NIST/EPA/NIH Mass Spectral Library
- 6: Sigma-Aldrich