

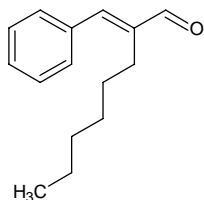
alpha-hexylcinnamaldehyde

α-ヘキシルシンナムアルデヒド

Formula C₁₅H₂₀O

Mol. Wt. 216.32

CAS No. 101-86-0



SEQ No. 1223 芳香族アルデヒド類

FEMA No. 2569

JECFA No. 686

	JFFMA	JECFA	FCC
Chemical name	alpha-hexylcinnamaldehyde	alpha-Hexylcinnamaldehyde	α-Hexylcinnamaldehyde
Content (NLT)	95.0 % (GC)	95 %	95.0 % sum of two isomers /GC(M1-b)
Refractive index	1.545-1.555 (n _{20D})	1.547-1.553 (n _{20D})	1.548-1.552 (n _{20D})
Specific gravity	0.953-0.964 (d _{20/20})	0.950-0.961 (d _{25/25})	0.953-0.959 (d _{25/25})
Acid value (NMT)	10.0	5.0	5.0
Melting/Congeealing point			
Angular/Specific rotation			
Heavy metals (NMT)			
Solubility in ethanol		miscible	1 mL in 1 mL 90% alc
Other requirements			Chlorinated Cmpds.- passes test
Identification*	IR : 1,2,3 MS : 3,4,5 NMR : 3	IR	IR

*References

- 1: Joint FAO/WHO Expert Committee on Food Additive (JECFA)
- 2: Food Chemicals Codex (FCC)
- 3: 有機化合物のスペクトルデータベース SDBS(独立行政法人産業技術総合研究所)
- 4: Wiley's Registry of Mass spectral Database
- 5: NIST/EPA/NIH Mass Spectral Library
- 6: Sigma-Aldrich