

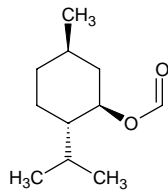
l-menthyl formate

l-メントール ホーメート

Formula C₁₁H₂₀O₂

Mol. Wt. 184.28

CAS No. 61949-23-3



SEQ No. 1524 エステル類

FEMA No. 4509

JECFA No.

	JFFMA	JECFA	FCC
Chemical name	l-menthyl formate		
Content (NLT)	97.0 % (GC)		
Refractive index	1.446-1.453 (n _{20D})		
Specific gravity	0.936-0.943 (d _{20/20})		
Acid value (NMT)	1.0		
Melting/Congeealing point			
Angular/Specific rotation	AR: -80 to -74° (α _{20D})		
Heavy metals (NMT)			
Solubility in ethanol			
Other requirements			
Identification*	IR	:3	
	MS	:3	
	NMR	:3	

*References

- 1: Joint FAO/WHO Expert Committee on Food Additive (JECFA)
- 2: Food Chemicals Codex (FCC)
- 3: 有機化合物のスペクトルデータベース SDBS(独立行政法人産業技術総合研究所)
- 4: Wiley's Registry of Mass spectral Database
- 5: NIST/EPA/NIH Mass Spectral Library
- 6: Sigma-Aldrich