

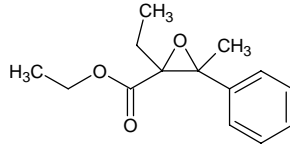
ethyl alpha-ethyl-beta-methyl-beta-phenylglycidate

エチル α -エチル- β -メチル- β -フェニルグリシデート

Formula C₁₄H₁₈O₃

Mol. Wt. 234.29

CAS No. 56630-76-3



SEQ No. 746 エステル類

FEMA No. 4653

JECFA No.

	JFFMA	JECFA	FCC
Chemical name	ethyl alpha-ethyl-beta-methyl-beta-phenylglycidate		
Content (NLT)	95.0 % (GC)		
Refractive index			
Specific gravity			
Acid value (NMT)	2.0		
Melting/Congeealing point	CP: 37 to 42°C		
Angular/Specific rotation			
Heavy metals (NMT)			
Solubility in ethanol			
Other requirements			
Identification*	IR :3		
	MS :3,4,5		
	NMR :3		

*References

- 1: Joint FAO/WHO Expert Committee on Food Additive (JECFA)
- 2: Food Chemicals Codex (FCC)
- 3: 有機化合物のスペクトルデータベース SDBS(独立行政法人産業技術総合研究所)
- 4: Wiley's Registry of Mass spectral Database
- 5: NIST/EPA/NIH Mass Spectral Library
- 6: Sigma-Aldrich