

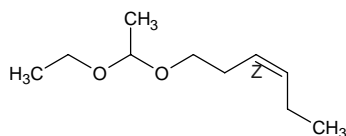
acetaldehyde ethyl cis-3-hexenyl acetal

アセトアルデヒド エチル cis-3-ヘキセニル アセタール

Formula C₁₀H₂₀O₂

Mol. Wt. 172.26

CAS No. 28069-74-1



SEQ No. 25 エーテル類

FEMA No. 3775

JECFA No. 943

	JFFMA	JECFA	FCC
Chemical name	acetaldehyde ethyl cis-3-hexenyl acetal	Acetaldehyde ethyl cis-3-hexenyl acetal	
Content (NLT)	98.0 % (GC)	97 %	
Refractive index	1.419-1.430 (n _{20D})	1.430-1.435 (n _{20D})	
Specific gravity	0.848-0.856 (d _{20/20})	0.846-0.856 (d _{25/25})	
Acid value (NMT)	2.0	2.0	
Melting/Congeealing point			
Angular/Specific rotation			
Heavy metals (NMT)			
Solubility in ethanol		miscible at room temperature	
Other requirements			
Identification*	IR :1,3 MS :3,4,5 NMR :3	IR	

*References

- 1: Joint FAO/WHO Expert Committee on Food Additive (JECFA)
- 2: Food Chemicals Codex (FCC)
- 3: 有機化合物のスペクトルデータベース SDBS(独立行政法人産業技術総合研究所)
- 4: Wiley's Registry of Mass spectral Database
- 5: NIST/EPA/NIH Mass Spectral Library
- 6: Sigma-Aldrich