

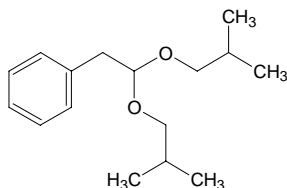
phenylacetaldehyde diisobutyl acetal

フェニルアセトアルデヒド ジイソブチル アセタール

Formula C₁₆H₂₆O₂

Mol. Wt. 250.38

CAS No. 68345-22-2



SEQ No. 2148 エーテル類

FEMA No. 3384

JECFA No. 1006

	JFFMA	JECFA	FCC
Chemical name	phenylacetaldehyde diisobutyl acetal	Phenylacetaldehyde diisobutyl acetal	
Content (NLT)	97.0 % (GC)	97 %	
Refractive index	1.468-1.474 (n _{20D})	1.468-1.476 (n _{20D})	
Specific gravity	0.916-0.922 (d _{20/20})	0.928-0.936 (d _{25/25})	
Acid value (NMT)	1.0	1.0	
Melting/Congeealing point			
Angular/Specific rotation			
Heavy metals (NMT)			
Solubility in ethanol		Miscible at room temperature	
Other requirements			
Identification*	IR :1 MS :4 NMR :	IR	

*References

- 1: Joint FAO/WHO Expert Committee on Food Additive (JECFA)
- 2: Food Chemicals Codex (FCC)
- 3: 有機化合物のスペクトルデータベース SDBS(独立行政法人産業技術総合研究所)
- 4: Wiley's Registry of Mass spectral Database
- 5: NIST/EPA/NIH Mass Spectral Library
- 6: Sigma-Aldrich