

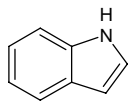
# indole

## インドール

Formula C<sub>8</sub>H<sub>7</sub>N

Mol. Wt. 117.15

CAS No. 120-72-9



SEQ No. 1278 インドール及びその誘導体

FEMA No. 2593

JECFA No. 1301

	JFFMA	JECFA	FCC
Chemical name	indole	Indole	Indole
Content (NLT)	97.0 % (GC)	97 %	99.0 % GC(M-1a)
Refractive index			
Specific gravity			
Acid value (NMT)			
Melting/Congeeing point	MP: 51 to 54°C	MP: 51 to 54°C	SP: NLT 51°C
Angular/Specific rotation			
Heavy metals (NMT)			
Solubility in ethanol		Soluble	1 g in 3 mL 70% alc
Other requirements			
Identification*	IR :2,3,5,6 MS :3,4,5 NMR :1,3,6	NMR	IR

### \*References

- 1: Joint FAO/WHO Expert Committee on Food Additive (JECFA)
- 2: Food Chemicals Codex (FCC)
- 3: 有機化合物のスペクトルデータベース SDBS(独立行政法人産業技術総合研究所)
- 4: Wiley's Registry of Mass spectral Database
- 5: NIST/EPA/NIH Mass Spectral Library
- 6: Sigma-Aldrich