

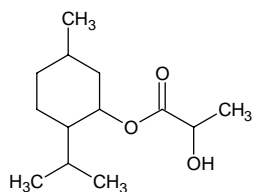
menthyl lactate

メントールラクテート

Formula C₁₃H₂₄O₃

Mol. Wt. 228.33

CAS No. 17162-29-7



SEQ No. エステル類

FEMA No.

JECFA No.

	JFFMA	JECFA	FCC
Chemical name	menthyl lactate		
Content (NLT)	90.0 % (GC)		
Refractive index			
Specific gravity			
Acid value (NMT)	1.0		
Melting/Congeealing point	MP: 42 to 47°C		
Angular/Specific rotation			
Heavy metals (NMT)			
Solubility in ethanol			
Other requirements			
Identification*	IR	: 1(No433)	
	MS	:	
	NMR	:	

*References

- 1: Joint FAO/WHO Expert Committee on Food Additive (JECFA)
- 2: Food Chemicals Codex (FCC)
- 3: 有機化合物のスペクトルデータベース SDBS(独立行政法人産業技術総合研究所)
- 4: Wiley's Registry of Mass spectral Database
- 5: NIST/EPA/NIH Mass Spectral Library
- 6: Sigma-Aldrich