

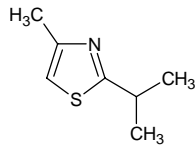
2-isopropyl-4-methylthiazole

2-イソプロピル-4-メチルチアゾール

Formula C₇H₁₁NS

Mol. Wt. 141.23

CAS No. 15679-13-7



SEQ No. 1434 チオエーテル類

FEMA No. 3555

JECFA No. 1037

	JFFMA	JECFA	FCC
Chemical name	2-isopropyl-4-methylthiazole	2-Isopropyl-4-methylthiazole	
Content (NLT)	95.0 % (GC)	96 %	
Refractive index	1.494-1.504 (n _{20D})	1.480-1.502 (n _{20D})	
Specific gravity	0.997-1.007 (d _{20/20})	1.001-1.006 (d _{25/25})	
Acid value (NMT)			
Melting/Congeealing point			
Angular/Specific rotation			
Heavy metals (NMT)			
Solubility in ethanol		Miscible at room temperature	
Other requirements			
Identification*	IR :1,3 MS :1,3,4,5 NMR :1,3	MS IR NMR	

*References

- 1: Joint FAO/WHO Expert Committee on Food Additive (JECFA)
- 2: Food Chemicals Codex (FCC)
- 3: 有機化合物のスペクトルデータベース SDBS(独立行政法人産業技術総合研究所)
- 4: Wiley's Registry of Mass spectral Database
- 5: NIST/EPA/NIH Mass Spectral Library
- 6: Sigma-Aldrich