

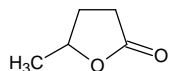
gamma-valerolactone

γ-バレロラクトン

Formula C₅H₈O₂

Mol. Wt. 100.12

CAS No. 108-29-2



SEQ No. 2486 ラクトン類

FEMA No. 3103

JECFA No. 220

	JFFMA	JECFA	FCC
Chemical name	gamma-valerolactone	gamma-Valerolactone	γ-Valerolactone
Content (NLT)	95.0 % (GC)	95.0 %	95.0 % GC(M-1b)
Refractive index	1.429-1.439 (n _{20D})	1.431-1.434 (n _{20D})	1.431-1.434 (n _{20D})
Specific gravity	1.051-1.061 (d _{20/20})	1.047-1.054 (d _{25/25})	1.047-1.054 (d _{25/25})
Acid value (NMT)	3.0		
Melting/Congeealing point			
Angular/Specific rotation			
Heavy metals (NMT)			
Solubility in ethanol			
Other requirements			
Identification*	IR : 1,2,3,6 MS : 3,4,5 NMR : 3,6	IR	IR

*References

- 1: Joint FAO/WHO Expert Committee on Food Additive (JECFA)
- 2: Food Chemicals Codex (FCC)
- 3: 有機化合物のスペクトルデータベース SDBS(独立行政法人産業技術総合研究所)
- 4: Wiley's Registry of Mass spectral Database
- 5: NIST/EPA/NIH Mass Spectral Library
- 6: Sigma-Aldrich