

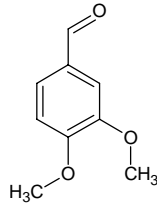
# 3,4-dimethoxybenzaldehyde

## 3,4-ジメトキシベンズアルデヒド

Formula C<sub>9</sub>H<sub>10</sub>O<sub>3</sub>

Mol. Wt. 166.17

CAS No. 120-14-9



SEQ No. 2491 芳香族アルデヒド類

FEMA No. 3109

JECFA No. 877

	JFFMA	JECFA	FCC
Chemical name	3,4-dimethoxybenz aldehyde	Veratraldehyde	Veratraldehyde
Content (NLT)	95.0 % (GC)	95 %	95.0 % GC(M-1b)
Refractive index			
Specific gravity			
Acid value (NMT)	5.0	2.0	
Melting/Congeeing point	MP: 40 to 48°C	MP: 42 to 45°C	SP: NLT 40°C
Angular/Specific rotation			
Heavy metals (NMT)			
Solubility in ethanol		soluble	1 mL in 1 mL 95% alc
Other requirements			
Identification*	IR : 1,3,6 MS : 3,4,5 NMR : 3,6	IR	

### \*References

- 1: Joint FAO/WHO Expert Committee on Food Additive (JECFA)
- 2: Food Chemicals Codex (FCC)
- 3: 有機化合物のスペクトルデータベース SDBS(独立行政法人産業技術総合研究所)
- 4: Wiley's Registry of Mass spectral Database
- 5: NIST/EPA/NIH Mass Spectral Library
- 6: Sigma-Aldrich