

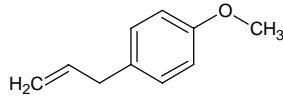
estragole

エストラゴール

Formula C₁₀H₁₂O

Mol. Wt. 148.20

CAS No. 140-67-0



SEQ No. 721 フェノールエーテル類

FEMA No. 2411

JECFA No. 1789

	JFFMA	JECFA	FCC
Chemical name	estragole	Estragole	Estragole
Content (NLT)	97.0 % (GC)	95 %	95.0 % GC(M-1a)
Refractive index	1.518-1.524 (n _{20D})	1.519-1.524 (n _{20D})	1.519-1.524 (n _{20D})
Specific gravity	0.963-0.971 (d _{20/20})	0.960-0.968 (d _{25/25})	0.960-0.968 (d _{25/25})
Acid value (NMT)			
Melting/Congeealing point			
Angular/Specific rotation			
Heavy metals (NMT)			
Solubility in ethanol		Soluble	1 mL in 6 mL 80% alc gives clear soln
Other requirements			
Identification*	IR :1,2,3,5,6 MS :1,3,4,5 NMR :3,6	IR MS	IR

*References

- 1: Joint FAO/WHO Expert Committee on Food Additive (JECFA)
- 2: Food Chemicals Codex (FCC)
- 3: 有機化合物のスペクトルデータベース SDBS(独立行政法人産業技術総合研究所)
- 4: Wiley's Registry of Mass spectral Database
- 5: NIST/EPA/NIH Mass Spectral Library
- 6: Sigma-Aldrich