

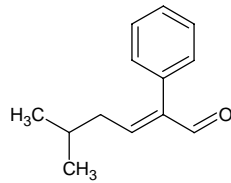
5-methyl-2-phenyl-2-hexenal

5-メチル-2-フェニル-2-ヘキセナール

Formula C₁₃H₁₆O

Mol. Wt. 188.27

CAS No. 21834-92-4



SEQ No. 1750 芳香族アルデヒド類

FEMA No. 3199

JECFA No. 1472

	JFFMA	JECFA	FCC
Chemical name	5-methyl-2-phenyl-2-hexenal	5-Methyl-2-phenyl-2-hexenal	5-Methyl 2-Phenyl 2-Hexenal
Content (NLT)	92.0 % (GC)	96 %	92.0 % sum of (E)- and (Z)isomers (M-1b)
Refractive index	1.526-1.536 (n _{20D})	1.531-1.536 (n _{20D})	1.529-1.536 (n _{20D})
Specific gravity	0.970-0.978 (d _{20/20})	0.970-0.976 (d _{25/25})	0.963-0.979 (d _{25/25})
Acid value (NMT)	10.0	10	4.0
Melting/Congeeing point			
Angular/Specific rotation			
Heavy metals (NMT)			
Solubility in ethanol		Soluble	1 mL in 1 mL 95% ethanol
Other requirements			
Identification*	IR :6 MS :4,5 NMR :1,6	NMR	IR

*References

- 1: Joint FAO/WHO Expert Committee on Food Additive (JECFA)
- 2: Food Chemicals Codex (FCC)
- 3: 有機化合物のスペクトルデータベース SDBS(独立行政法人産業技術総合研究所)
- 4: Wiley's Registry of Mass spectral Database
- 5: NIST/EPA/NIH Mass Spectral Library
- 6: Sigma-Aldrich