

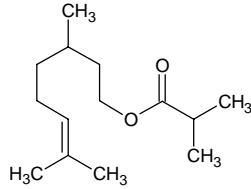
# citronellyl isobutyrate

## シトロネリル イソブチレート

Formula C<sub>14</sub>H<sub>26</sub>O<sub>2</sub>

Mol. Wt. 226.35

CAS No. 97-89-2



SEQ No. 411 エステル類

FEMA No. 2313

JECFA No. 71

	JFFMA	JECFA	FCC
Chemical name	citronellyl isobutyrate	Citronellyl isobutyrate	Citronellyl Isobutyrate
Content (NLT)	98.0 % (Chem)	92 % total esters	92.0 % total esters as C <sub>14</sub> H <sub>26</sub> O <sub>2</sub> /Chem(Appendix IV; 1.5g/113.2)
Refractive index	1.438–1.445 (n <sub>20D</sub> )	1.440–1.448 (n <sub>20D</sub> )	1.440–1.448 (n <sub>20D</sub> )
Specific gravity	0.873–0.883 (d <sub>20/20</sub> )	0.870–0.880 (d <sub>25/25</sub> )	0.870–0.880 (d <sub>25/25</sub> )
Acid value (NMT)	1.0	1	1.0
Melting/Congeaing point			
Angular/Specific rotation			
Heavy metals (NMT)			
Solubility in ethanol		1 ml in 6 ml 80% alcohol gives clear soln	1 mL in 6 mL 80% alc gives clear soln
Other requirements		SC: citronellol	
Identification*	IR :1,2 MS :4 NMR :	IR	IR

### \*References

- 1: Joint FAO/WHO Expert Committee on Food Additive (JECFA)
- 2: Food Chemicals Codex (FCC)
- 3: 有機化合物のスペクトルデータベース SDBS(独立行政法人産業技術総合研究所)
- 4: Wiley's Registry of Mass spectral Database
- 5: NIST/EPA/NIH Mass Spectral Library
- 6: Sigma-Aldrich