

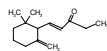
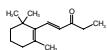
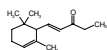
# methylionone

## メチルイオンン

Formula C<sub>14</sub>H<sub>22</sub>O

Mol. Wt. 206.32

CAS No. 1335-46-2



normal-



iso-

alpha-

beta-

gamma-

SEQ No. 1661 ケトン類

FEMA No. 2714

JECFA No.

	JFFMA	JECFA	FCC
Chemical name	methylionone		Methyl Ionones
Content (NLT)	90.0 % (Chem)		88.0 % sum of four isomers
Refractive index	1.494–1.506 (n <sub>20D</sub> )		1.497–1.507 (n <sub>20D</sub> )
Specific gravity	0.924–0.938 (d <sub>20/20</sub> )		0.925–0.934 (d <sub>25/25</sub> )
Acid value (NMT)			5.0
Melting/Congeealing point			
Angular/Specific rotation			
Heavy metals (NMT)			
Solubility in ethanol			1 mL in 1 mL 95% ethanol
Other requirements			
Identification*	IR :1(No398),3 MS :3,4 NMR :3		

### \*References

- 1: Joint FAO/WHO Expert Committee on Food Additive (JECFA)
- 2: Food Chemicals Codex (FCC)
- 3: 有機化合物のスペクトルデータベース SDBS(独立行政法人産業技術総合研究所)
- 4: Wiley's Registry of Mass spectral Database
- 5: NIST/EPA/NIH Mass Spectral Library
- 6: Sigma-Aldrich