

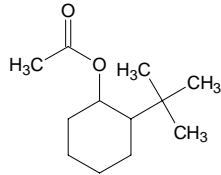
2-tert-butylcyclohexyl acetate

2-tert-ブチルシクロヘキシル アセテート

Formula C₁₂H₂₂O₂

Mol. Wt. 198.30

CAS No. 88-41-5



SEQ No. 2586 エステル類

FEMA No.

JECFA No.

	JFFMA	JECFA	FCC
Chemical name	2-tert-butylcyclohexyl acetate		
Content (NLT)	98.0 % (GC)		
Refractive index	1.448-1.456 (n _{20D})		
Specific gravity	0.938-0.948 (d _{20/20})		
Acid value (NMT)	1.0		
Melting/Congeealing point	MP: 25 to 29°C		
Angular/Specific rotation			
Heavy metals (NMT)			
Solubility in ethanol			
Other requirements	屈折率・比重は参考値		
Identification*	IR :3		
	MS :3		
	NMR :		

*References

- 1: Joint FAO/WHO Expert Committee on Food Additive (JECFA)
- 2: Food Chemicals Codex (FCC)
- 3: 有機化合物のスペクトルデータベース SDBS(独立行政法人産業技術総合研究所)
- 4: Wiley's Registry of Mass spectral Database
- 5: NIST/EPA/NIH Mass Spectral Library
- 6: Sigma-Aldrich