

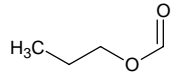
propyl formate

プロピル ホーマート

Formula C₄H₈O₂

Mol. Wt. 88.11

CAS No. 110-74-7



SEQ No. 2224 エステル類

FEMA No. 2943

JECFA No. 117

	JFFMA	JECFA	FCC
Chemical name	propyl formate	Propyl formate	Propyl Formate
Content (NLT)	96.0 % (GC)	94 %	95.0 % GC(M-1b)
Refractive index	1.372-1.382 (n _{20D})	1.369-1.384 (n _{20D})	1.374-1.380 (n _{20D})
Specific gravity	0.902-0.912 (d _{20/20})	0.895-0.905 (d _{25/25})	0.898-0.904 (d _{25/25})
Acid value (NMT)	1.0		5.0 (add ice to soln)
Melting/Congeealing point			
Angular/Specific rotation			
Heavy metals (NMT)			
Solubility in ethanol			1 mL in 1 mL 95% ethanol
Other requirements		SC: propyl alcohol	
Identification*	IR :1,2,3 MS :3,4,5 NMR :3,6	IR	IR

*References

- 1: Joint FAO/WHO Expert Committee on Food Additive (JECFA)
- 2: Food Chemicals Codex (FCC)
- 3: 有機化合物のスペクトルデータベース SDBS(独立行政法人産業技術総合研究所)
- 4: Wiley's Registry of Mass spectral Database
- 5: NIST/EPA/NIH Mass Spectral Library
- 6: Sigma-Aldrich