

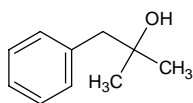
2-methyl-1-phenyl-2-propanol

2-メチル-1-フェニル-2-プロパノール

Formula C₁₀H₁₄O

Mol. Wt. 150.22

CAS No. 100-86-7



SEQ No. 612 芳香族アルコール類

FEMA No. 2393

JECFA No. 1653

	JFFMA	JECFA	FCC
Chemical name	2-methyl-1-phenyl-2-propanol	alpha,alpha-Dimethylphenethyl alcohol	Dimethyl Benzyl Carbinol
Content (NLT)	98.0 % (GC)	97 %	97.0 % GC(M-1b)
Refractive index	1.512-1.518 (n _{20D})	1.514-1.517 (n _{20D})	1.514-1.517 (n _{20D})
Specific gravity	0.974-0.980 (d _{20/20})	0.972-0.977 (d _{25/25})	0.972-0.977 (d _{25/25})
Acid value (NMT)			1.0
Melting/Congeeing point		MP: 23.7 to 24.5°C	SP: NLT 22°C
Angular/Specific rotation			
Heavy metals (NMT)			
Solubility in ethanol		Soluble	1 mL in 3 mL 50% alc remains in soln to 10 mL
Other requirements		RI: as supercooled liquid	Chlorinated Cmpds.- passes test
Identification*	IR :1,2,3,5 MS :3,4,5 NMR :1,3	NMR IR	IR

*References

- 1: Joint FAO/WHO Expert Committee on Food Additive (JECFA)
- 2: Food Chemicals Codex (FCC)
- 3: 有機化合物のスペクトルデータベース SDBS(独立行政法人産業技術総合研究所)
- 4: Wiley's Registry of Mass spectral Database
- 5: NIST/EPA/NIH Mass Spectral Library
- 6: Sigma-Aldrich