

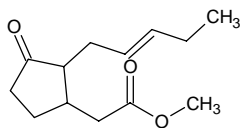
# methyl [3-oxo-2-(2-pentenyl)cyclopentyl]acetate

## メチル [3-オキソ-2-(2-ペンテニル)シクロペンチル]アセテート

Formula C<sub>13</sub>H<sub>20</sub>O<sub>3</sub>

Mol. Wt. 224.30

CAS No. 39924-52-2  
1211-29-6



SEQ No. 1669 エステル類

FEMA No. 3410

JECFA No. 1400

	JFFMA	JECFA	FCC
Chemical name	methyl [3-oxo-2-(2-pentenyl)cyclopentyl]acetate	Methyl jasmonate	
Content (NLT)	95.0 % (GC)	99 %	
Refractive index	1.470-1.477 (n <sub>20D</sub> )	1.470-1.476 (n <sub>20D</sub> )	
Specific gravity	1.022-1.033 (d <sub>20/20</sub> )	1.017-1.023 (d <sub>25/25</sub> )	
Acid value (NMT)	2.0	1	
Melting/Congeealing point			
Angular/Specific rotation			
Heavy metals (NMT)			
Solubility in ethanol		Soluble	
Other requirements			
Identification*	IR :6 MS :4 NMR :1,6	NMR	

#### \*References

- 1: Joint FAO/WHO Expert Committee on Food Additive (JECFA)
- 2: Food Chemicals Codex (FCC)
- 3: 有機化合物のスペクトルデータベース SDBS(独立行政法人産業技術総合研究所)
- 4: Wiley's Registry of Mass spectral Database
- 5: NIST/EPA/NIH Mass Spectral Library
- 6: Sigma-Aldrich