

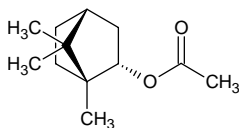
bornyl acetate

ボルニル アセテート

Formula C₁₂H₂₀O₂

Mol. Wt. 196.29

CAS No. 76-49-3



SEQ No. 252 エステル類

FEMA No. 2159

JECFA No. 1387

	JFFMA	JECFA	FCC
Chemical name	bornyl acetate	Bornyl acetate	Bornyl Acetate
Content (NLT)	95.0 % (GC)	98 %	98.0 % GC(M-1b)
Refractive index	1.460-1.470 (n _{20D})	1.462-1.466 (n _{20D})	1.462-1.466 (n _{20D})
Specific gravity	0.982-0.992 (d _{20/20})	0.981-0.985 (d _{25/25})	0.981-0.985 (d _{25/25})
Acid value (NMT)	1.0	1.0	1.0
Melting/Congeealing point		MP: 25°C	SP: NLT 25°C
Angular/Specific rotation			AR: -45 to -39.5°
Heavy metals (NMT)			
Solubility in ethanol		Soluble	1 mL in 3 mL 70% alc remains in soln to 10 mL
Other requirements		Minimum assay value may include isobornyl acetate and other bornyl acetate isomers	
Identification*	IR :1,2 MS :4,5 NMR :3	IR	IR

*References

- 1: Joint FAO/WHO Expert Committee on Food Additive (JECFA)
- 2: Food Chemicals Codex (FCC)
- 3: 有機化合物のスペクトルデータベース SDBS(独立行政法人産業技術総合研究所)
- 4: Wiley's Registry of Mass spectral Database
- 5: NIST/EPA/NIH Mass Spectral Library
- 6: Sigma-Aldrich