

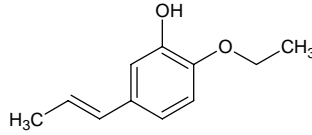
2-ethoxy-5-(1-propenyl)phenol

2-エトキシ-5-(1-プロペニル)フェノール

Formula C₁₁H₁₄O₂

Mol. Wt. 178.23

CAS No. 94-86-0



SEQ No. 2497 フェノール類

FEMA No. 2922

JECFA No. 1264

	JFFMA	JECFA	FCC
Chemical name	2-ethoxy-5-(1-propenyl)phenol	Propenylguaethol	Propenylguaethol
Content (NLT)	97.0 % (GC)	97 %	99.0 % GC(M-1a)
Refractive index			
Specific gravity			
Acid value (NMT)		1	
Melting/Congeeing point	MP: 84 to 88°C	MP: 85 to 88°C	MP: 85 to 88°C
Angular/Specific rotation			
Heavy metals (NMT)			
Solubility in ethanol		soluble	1 g in 15 mL 95% ethanol
Other requirements			Residue on Ignit. 0.1%
Identification*	IR : 1,2,6 MS : 4,5 NMR : 6	IR	IR

*References

- 1: Joint FAO/WHO Expert Committee on Food Additive (JECFA)
- 2: Food Chemicals Codex (FCC)
- 3: 有機化合物のスペクトルデータベース SDBS(独立行政法人産業技術総合研究所)
- 4: Wiley's Registry of Mass spectral Database
- 5: NIST/EPA/NIH Mass Spectral Library
- 6: Sigma-Aldrich