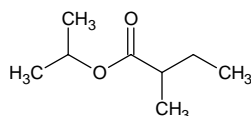


isopropyl 2-methylbutyrate

イソプロピル 2-メチルブチレート

Formula C₈H₁₆O₂

Mol. Wt. 144.21



CAS No. 66576-71-4

SEQ No. 1400 エステル類

FEMA No. 3699

JECFA No. 210

	JFFMA	JECFA	FCC
Chemical name	isopropyl 2-methylbutyrate	Isopropyl 2-methylbutyrate	
Content (NLT)	98.0 % (GC)	98 %	
Refractive index	1.395-1.401 (n _{20D})	1.395-1.399 (n _{20D})	
Specific gravity	0.851-0.857 (d _{20/20})	0.847-0.855 (d _{25/25})	
Acid value (NMT)	1.0		
Melting/Congeealing point			
Angular/Specific rotation			
Heavy metals (NMT)			
Solubility in ethanol		soluble	
Other requirements			
Identification*	IR : 1,6 MS : 4,5 NMR :	IR	

*References

- 1: Joint FAO/WHO Expert Committee on Food Additive (JECFA)
- 2: Food Chemicals Codex (FCC)
- 3: 有機化合物のスペクトルデータベース SDBS(独立行政法人産業技術総合研究所)
- 4: Wiley's Registry of Mass spectral Database
- 5: NIST/EPA/NIH Mass Spectral Library
- 6: Sigma-Aldrich