

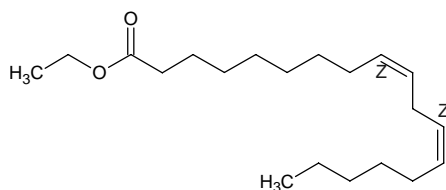
ethyl linoleate

エチル リノレート

Formula C₂₀H₃₆O₂

Mol. Wt. 308.50

CAS No. 544-35-4



SEQ No. 848 エステル類

FEMA No.

JECFA No.

	JFFMA	JECFA	FCC
Chemical name	ethyl linoleate		
Content (NLT)	98-104 % (Chem)		
Refractive index	1.451-1.461 (n _{20D})		
Specific gravity	0.872-0.882 (d ₂₀ /20)		
Acid value (NMT)	1.0		
Melting/Congeealing point			
Angular/Specific rotation			
Heavy metals (NMT)			
Solubility in ethanol			
Other requirements			
Identification*	IR : 3,6		
	MS : 3,4,5		
	NMR : 6		

*References

- 1: Joint FAO/WHO Expert Committee on Food Additive (JECFA)
- 2: Food Chemicals Codex (FCC)
- 3: 有機化合物のスペクトルデータベース SDBS(独立行政法人産業技術総合研究所)
- 4: Wiley's Registry of Mass spectral Database
- 5: NIST/EPA/NIH Mass Spectral Library
- 6: Sigma-Aldrich