

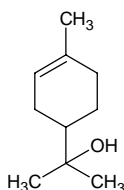
# alpha-terpineol

## α-テルピネオール

Formula C<sub>10</sub>H<sub>18</sub>O

Mol. Wt. 154.25

CAS No. 98-55-5  
10482-56-1



SEQ No. 2321 脂肪族高級アルコール類

FEMA No. 3045

JECFA No. 366

	JFFMA	JECFA	FCC
Chemical name	alpha-terpineol	alpha-Terpineol	α-Terpineol
Content (NLT)	96.0 % (GC)	96.0 %	96.0 % sum of isomers /GC(M-1a)
Refractive index	1.478-1.488 (n <sub>20D</sub> )	1.482-1.485 (n <sub>20D</sub> )	1.482-1.485 (n <sub>20D</sub> )
Specific gravity	0.930-0.941 (d <sub>20/20</sub> )	0.930-0.936 (d <sub>25/25</sub> )	0.930-0.936 (d <sub>25/25</sub> )
Acid value (NMT)			
Melting/Congeealing point			
Angular/Specific rotation		OR: -35 to -15°	
Heavy metals (NMT)			
Solubility in ethanol		1 ml in 2 ml 70% alcohol; 1 ml in 4 ml 60% alcohol	1 mL in 2 mL 70% alc, 4 mL 60% alc, 8 mL 50% alc
Other requirements			
Identification*	IR : 1,2,3,5 MS : 3,4,5 NMR : 3,6	IR	IR

### \*References

- 1: Joint FAO/WHO Expert Committee on Food Additive (JECFA)
- 2: Food Chemicals Codex (FCC)
- 3: 有機化合物のスペクトルデータベース SDBS(独立行政法人産業技術総合研究所)
- 4: Wiley's Registry of Mass spectral Database
- 5: NIST/EPA/NIH Mass Spectral Library
- 6: Sigma-Aldrich