

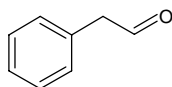
# phenylacetaldehyde

## フェニルアセトアルデヒド

Formula C<sub>8</sub>H<sub>8</sub>O

Mol. Wt. 120.15

CAS No. 122-78-1



SEQ No. 2146 芳香族アルデヒド類

FEMA No. 2874

JECFA No. 1002

	JFFMA	JECFA	FCC
Chemical name	phenylacetaldehyde	Phenylacetaldehyde	Phenylacetaldehyde
Content (NLT)	95.0 % (Chem)	95 %	90.0 % GC(M-1b)
Refractive index	1.522-1.532 (n <sub>20D</sub> )	1.524-1.545 (n <sub>20D</sub> )	1.525-1.545 (n <sub>20D</sub> )
Specific gravity	1.028-1.038 (d <sub>20/20</sub> )	1.023-1.045 (d <sub>25/25</sub> )	1.025-1.045 (d <sub>25/25</sub> )
Acid value (NMT)	5.0	5.0	5.0
Melting/Congeealing point			
Angular/Specific rotation			
Heavy metals (NMT)			
Solubility in ethanol		1 mL in 2 mL 80% ethanol	1 mL in 2 mL 80% alc ethanol
Other requirements		polymerises upon storage; stable in ethanolic solution. The minimum assay value applies either to the pure compound (freshly prepared) or to a 10% solution in ethanol	
Identification*	IR :2,3,5,6 MS :3,4,5 NMR :1	NMR	IR

### \*References

- 1: Joint FAO/WHO Expert Committee on Food Additive (JECFA)
- 2: Food Chemicals Codex (FCC)
- 3: 有機化合物のスペクトルデータベース SDBS(独立行政法人産業技術総合研究所)
- 4: Wiley's Registry of Mass spectral Database
- 5: NIST/EPA/NIH Mass Spectral Library
- 6: Sigma-Aldrich