

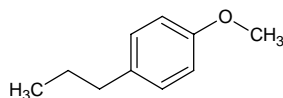
1-methoxy-4-propylbenzene

1-メトキシ-4-プロピルベンゼン

Formula C₁₀H₁₄O

Mol. Wt. 150.22

CAS No. 104-45-0



SEQ No. 2215 フェノールエーテル類

FEMA No. 2930

JECFA No. 1244

	JFFMA	JECFA	FCC
Chemical name	1-methoxy-4-propylbenzene	p-Propylanisole	p-Propyl Anisole
Content (NLT)	98.0 % (GC)	99 %	99.0 % GC(M-1a)
Refractive index	1.503-1.506 (n _{20D})	1.503-1.506 (n _{20D})	1.502-0.506 (n _{20D})
Specific gravity	0.941-0.947 (d _{20/20})	0.940-0.943 (d _{25/25})	0.940-0.943 (d _{25/25})
Acid value (NMT)		1	
Melting/Congeealing point			
Angular/Specific rotation			
Heavy metals (NMT)			
Solubility in ethanol		soluble	1 mL in 5 mL 80% alc remains in soln on dilution
Other requirements			
Identification*	IR : 1,2,5 MS : 4,5 NMR :	IR	IR

*References

- 1: Joint FAO/WHO Expert Committee on Food Additive (JECFA)
- 2: Food Chemicals Codex (FCC)
- 3: 有機化合物のスペクトルデータベース SDBS(独立行政法人産業技術総合研究所)
- 4: Wiley's Registry of Mass spectral Database
- 5: NIST/EPA/NIH Mass Spectral Library
- 6: Sigma-Aldrich