

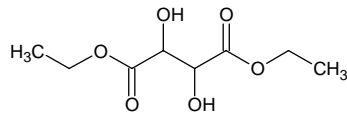
diethyl tartrate

ジエチル タータレート

Formula C₈H₁₄O₆

Mol. Wt. 206.19

CAS No. 87-91-2



SEQ No. 557 エステル類

FEMA No. 2378

JECFA No. 622

	JFFMA	JECFA	FCC
Chemical name	diethyl tartrate	Diethyl tartrate	
Content (NLT)	97.0 % (GC)	97 %	
Refractive index	1.443-1.449 (n _{20D})	1.443-1.449 (n _{20D})	
Specific gravity	1.203-1.210 (d ₂₀ /20)	1.203-1.210 (20°C)	
Acid value (NMT)	3.0		
Melting/Congeealing point			
Angular/Specific rotation			
Heavy metals (NMT)			
Solubility in ethanol			
Other requirements			
Identification*	IR : 1,3,5,6 MS : 3,4,5 NMR : 3,6	IR	

*References

- 1: Joint FAO/WHO Expert Committee on Food Additive (JECFA)
- 2: Food Chemicals Codex (FCC)
- 3: 有機化合物のスペクトルデータベース SDBS(独立行政法人産業技術総合研究所)
- 4: Wiley's Registry of Mass spectral Database
- 5: NIST/EPA/NIH Mass Spectral Library
- 6: Sigma-Aldrich