

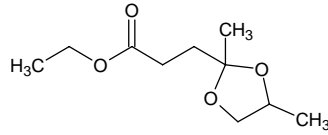
# ethyl levulinate propyleneglycol acetal

## エチル レブリネート プロピレングリコール アセタール

Formula C<sub>10</sub>H<sub>18</sub>O<sub>4</sub>

Mol. Wt. 202.25

CAS No.



SEQ No. 847 エステル類

FEMA No. 4479

JECFA No. 1973

	JFFMA	JECFA	FCC
Chemical name	ethyl levulinate propyleneglycol acetal	Ethyl levulinate propyleneglycol ketal (Safety evaluation not completed)	
Content (NLT)	98.0 % (GC)	98 %	
Refractive index	1.427-1.434 (n <sub>20D</sub> )	1.427-1.434 (n <sub>20D</sub> )	
Specific gravity	1.027-1.035 (d <sub>20/20</sub> )	1.027-1.035 (20°C)	
Acid value (NMT)	1.0	1	
Melting/Congeaing point			
Angular/Specific rotation			
Heavy metals (NMT)			
Solubility in ethanol		Soluble	
Other requirements		Safety evaluation not completed	
Identification*	IR : MS : 1,4,5 NMR :	MS	

\*References

- 1: Joint FAO/WHO Expert Committee on Food Additive (JECFA)
- 2: Food Chemicals Codex (FCC)
- 3: 有機化合物のスペクトルデータベース SDBS(独立行政法人産業技術総合研究所)
- 4: Wiley's Registry of Mass spectral Database
- 5: NIST/EPA/NIH Mass Spectral Library
- 6: Sigma-Aldrich