

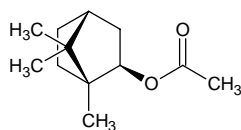
# isobornyl acetate

## イソボルニル アセテート

Formula C<sub>12</sub>H<sub>20</sub>O<sub>2</sub>

Mol. Wt. 196.29

CAS No. 125-12-2



SEQ No. 1322 エステル類

FEMA No. 2160

JECFA No. 1388

	JFFMA	JECFA	FCC
Chemical name	isobornyl acetate	Isobornyl acetate	Isobornyl Acetate
Content (NLT)	90.0 % (GC)	97 %	97.0 % GC(M-1b)
Refractive index	1.460-1.470 (n <sub>20D</sub> )	1.462-1.465 (n <sub>20D</sub> )	1.462-1.465 (n <sub>20D</sub> )
Specific gravity	0.980-0.990 (d <sub>20/20</sub> )	0.979-0.984 (d <sub>25/25</sub> )	0.979-0.984 (d <sub>25/25</sub> )
Acid value (NMT)	1.0	1	1.0
Melting/Congeealing point			
Angular/Specific rotation			AR: -4 to 0°
Heavy metals (NMT)			
Solubility in ethanol		Soluble	1 mL in 3 mL 70% alc
Other requirements		Minimum assay value may include small amounts of bornyl acetate	
Identification*	IR : 1,2,3,5 MS : 3,4,5 NMR : 3	IR	IR

### \*References

- 1: Joint FAO/WHO Expert Committee on Food Additive (JECFA)
- 2: Food Chemicals Codex (FCC)
- 3: 有機化合物のスペクトルデータベース SDBS(独立行政法人産業技術総合研究所)
- 4: Wiley's Registry of Mass spectral Database
- 5: NIST/EPA/NIH Mass Spectral Library
- 6: Sigma-Aldrich