

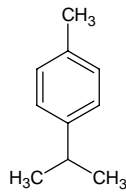
p-cymene

p-サイメン

Formula C₁₀H₁₄

Mol. Wt. 134.22

CAS No. 99-87-6



SEQ No. 480 テルペン系炭化水素類

FEMA No. 2356

JECFA No. 1325

	JFFMA	JECFA	FCC
Chemical name	p-cymene	p-Cymene	p-Cymene
Content (NLT)	95.0 % (GC)	97 %	97.0 % GC(M-1a)
Refractive index	1.482-1.492 (n _{20D})	1.484-1.491 (n _{20D})	1.489-1.491 (n _{20D})
Specific gravity	0.852-0.862 (d _{20/20})	0.853-0.855 (d _{25/25})	0.853-0.855 (d _{25/25})
Acid value (NMT)		1.0	
Melting/Congeealing point			
Angular/Specific rotation			
Heavy metals (NMT)			
Solubility in ethanol		Soluble	1 mL in 1 mL 95% alc
Other requirements			
Identification*	IR :1,2,3,5 MS :3,4,5 NMR :3	IR	IR

*References

- 1: Joint FAO/WHO Expert Committee on Food Additive (JECFA)
- 2: Food Chemicals Codex (FCC)
- 3: 有機化合物のスペクトルデータベース SDBS(独立行政法人産業技術総合研究所)
- 4: Wiley's Registry of Mass spectral Database
- 5: NIST/EPA/NIH Mass Spectral Library
- 6: Sigma-Aldrich