

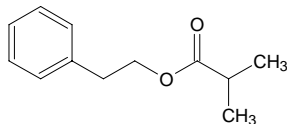
phenethyl isobutyrate

フェネチル イソブチレート

Formula C₁₂H₁₆O₂

Mol. Wt. 192.25

CAS No. 103-48-0



SEQ No. 2113 エステル類

FEMA No. 2862

JECFA No. 992

	JFFMA	JECFA	FCC
Chemical name	phenethyl isobutyrate	Phenethyl isobutyrate	Phenethyl Isobutyrate
Content (NLT)	98.0 % (GC)	98 %	98.0 % GC(M-1b)
Refractive index	1.484-1.490 (n _{20D})	1.485-1.490 (n _{20D})	1.486-1.490 (n _{20D})
Specific gravity	0.988-0.994 (d _{20/20})	0.987-0.990 (d _{25/25})	0.987-0.990 (d _{25/25})
Acid value (NMT)	1.0	1.0	1.0
Melting/Congeealing point			
Angular/Specific rotation			
Heavy metals (NMT)			
Solubility in ethanol		1 mL in 3 ml 80% ethanol	1 mL in 3 mL 80% alc gives clear soln
Other requirements			
Identification*	IR :1,2 MS :4,5 NMR :	IR	IR

*References

- 1: Joint FAO/WHO Expert Committee on Food Additive (JECFA)
- 2: Food Chemicals Codex (FCC)
- 3: 有機化合物のスペクトルデータベース SDBS(独立行政法人産業技術総合研究所)
- 4: Wiley's Registry of Mass spectral Database
- 5: NIST/EPA/NIH Mass Spectral Library
- 6: Sigma-Aldrich