

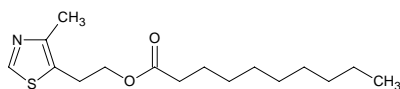
## 2-(4-methyl-5-thiazolyl)ethyl decanoate

### 2-(4-メチル-5-チアゾリル)エチル デカノエート

Formula C<sub>16</sub>H<sub>27</sub>NO<sub>2</sub>S

Mol. Wt. 297.46

CAS No. 101426-31-7



SEQ No. 2308 エステル類

FEMA No. 4281

JECFA No. 1757

	JFFMA	JECFA	FCC
Chemical name	2-(4-methyl-5-thiazolyl)ethyl decanoate	2-(4-Methyl-5-thiazolyl)ethyl decanoate	
Content (NLT)	98.0 % (GC)	95 %	
Refractive index	1.486-1.492 (n <sub>20D</sub> )	1.486-1.492 (n <sub>20D</sub> )	
Specific gravity	1.012-1.018 (d <sub>20/20</sub> )	1.012-1.018 (d <sub>25/25</sub> )	
Acid value (NMT)	1.0	1	
Melting/Congeealing point			
Angular/Specific rotation			
Heavy metals (NMT)			
Solubility in ethanol		Soluble	
Other requirements			
Identification*	IR : MS :4,5 NMR :1	HNMR	

#### \*References

- 1: Joint FAO/WHO Expert Committee on Food Additive (JECFA)
- 2: Food Chemicals Codex (FCC)
- 3: 有機化合物のスペクトルデータベース SDBS(独立行政法人産業技術総合研究所)
- 4: Wiley's Registry of Mass spectral Database
- 5: NIST/EPA/NIH Mass Spectral Library
- 6: Sigma-Aldrich