

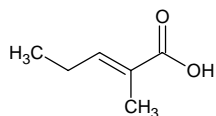
## 2-methyl-2-pentenoic acid

### 2-メチル-2-ペンテノイック アシド

Formula C<sub>6</sub>H<sub>10</sub>O<sub>2</sub>

Mol. Wt. 114.14

CAS No. 3142-72-1



SEQ No. 1749 脂肪酸類

FEMA No. 3195

JECFA No. 1210

	JFFMA	JECFA	FCC
Chemical name	2-methyl-2-pentenoic acid	2-Methyl-2-pentenoic acid	2-Methyl-2-pentenoic Acid
Content (NLT)	95.0 % (GC)	98 % (Chem)	98.0 % Chem(M-3a)
Refractive index		1.450-1.460 (n <sub>20</sub> D)	1.455-1.465 (n <sub>20</sub> D)
Specific gravity		0.976-0.982 (d <sub>25</sub> /25)	0.978-0.985 (d <sub>25</sub> /25)
Acid value (NMT)			
Melting/Congeeing point	MP: 24 to 28°C		
Angular/Specific rotation			
Heavy metals (NMT)			
Solubility in ethanol		soluble	1 mL in 1mL 95% alc
Other requirements			
Identification*	IR : 1,2,3 MS : 3,4,5 NMR : 3	IR	IR

#### \*References

- 1: Joint FAO/WHO Expert Committee on Food Additive (JECFA)
- 2: Food Chemicals Codex (FCC)
- 3: 有機化合物のスペクトルデータベース SDBS(独立行政法人産業技術総合研究所)
- 4: Wiley's Registry of Mass spectral Database
- 5: NIST/EPA/NIH Mass Spectral Library
- 6: Sigma-Aldrich