

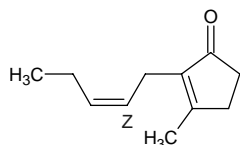
3-methyl-2-(cis-2-pentenyl)-2-cyclopentenone

3-メチル-2-(cis-2-ペンテニル)-2-シクロペンテノン

Formula C₁₁H₁₆O

Mol. Wt. 164.24

CAS No. 488-10-8



SEQ No. 1453 ケトン類

FEMA No. 3196

JECFA No. 1114

	JFFMA	JECFA	FCC
Chemical name	3-methyl-2-(cis-2-pentenyl)-2-cyclopentenone	3-Methyl-2-(2-pentenyl)-2-cyclopenten-1-one	
Content (NLT)	98.0 % (GC)	98 % (cis)	
Refractive index	1.496-1.502 (n _{20D})	1.495-1.501 (n _{20D})	
Specific gravity	0.940-0.947 (d _{20/20})	0.942-0.948 (d _{25/25})	
Acid value (NMT)		2.0	
Melting/Congeeing point			
Angular/Specific rotation			
Heavy metals (NMT)			
Solubility in ethanol		Miscible at room temperature	
Other requirements			
Identification*	IR :3,6 MS :3,4,5 NMR :1,3,6	NMR	

*References

- 1: Joint FAO/WHO Expert Committee on Food Additive (JECFA)
- 2: Food Chemicals Codex (FCC)
- 3: 有機化合物のスペクトルデータベース SDBS(独立行政法人産業技術総合研究所)
- 4: Wiley's Registry of Mass spectral Database
- 5: NIST/EPA/NIH Mass Spectral Library
- 6: Sigma-Aldrich