

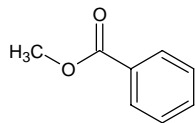
# methyl benzoate

## メチル ベンゾエート

Formula C<sub>8</sub>H<sub>8</sub>O<sub>2</sub>

Mol. Wt. 136.15

CAS No. 93-58-3



SEQ No. 1631 エステル類

FEMA No. 2683

JECFA No. 851

	JFFMA	JECFA	FCC
Chemical name	methyl benzoate	Methyl benzoate	Methyl Benzoate
Content (NLT)	98.0 % (GC)	98 %	98.0 % GC(M-1b)
Refractive index	1.513-1.519 (n <sub>20D</sub> )	1.513-1.520 (n <sub>20D</sub> )	1.514-1.518 (n <sub>20D</sub> )
Specific gravity	1.087-1.093 (d <sub>20/20</sub> )	1.082-1.089 (d <sub>25/25</sub> )	1.082-1.088 (d <sub>25/25</sub> )
Acid value (NMT)	1.0	1.0	1.0
Melting/Congeealing point			
Angular/Specific rotation			
Heavy metals (NMT)			
Solubility in ethanol		miscible at room temperature	1 mL in 4 mL 60% alc
Other requirements			Chlorinated Cmpds.- passes test
Identification*	IR : 1,2,3 MS : 3,4,5 NMR : 3,6	IR	IR

### \*References

- 1: Joint FAO/WHO Expert Committee on Food Additive (JECFA)
- 2: Food Chemicals Codex (FCC)
- 3: 有機化合物のスペクトルデータベース SDBS(独立行政法人産業技術総合研究所)
- 4: Wiley's Registry of Mass spectral Database
- 5: NIST/EPA/NIH Mass Spectral Library
- 6: Sigma-Aldrich