

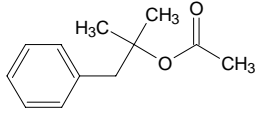
2-methyl-1-phenyl-2-propyl acetate

2-メチル-1-フェニル-2-プロピル アセテート

Formula C₁₂H₁₆O₂

Mol. Wt. 192.25

CAS No. 151-05-3



SEQ No. 660 エステル類

FEMA No. 2392

JECFA No. 1655

	JFFMA	JECFA	FCC
Chemical name	2-methyl-1-phenyl-2-propyl acetate	alpha,alpha-Dimethylphenethyl acetate	Dimethyl Benzyl Carbinyol Acetate
Content (NLT)	98.0 % (GC)	98 %	98.0 % GC(M-1b)
Refractive index		1.490-1.495 (n _{20D})	1.490-1.495 (n _{20D})
Specific gravity		0.995-1.002 (d _{25/25})	0.995-1.002 (d _{25/25})
Acid value (NMT)	1.0		1.0
Melting/Congeealing point	CP: 28 to 36°C	MP: 29 to 30°C	SP: NLT 28°C
Angular/Specific rotation			
Heavy metals (NMT)			
Solubility in ethanol		Soluble	1 mL in 4 mL 70% alc
Other requirements			Chlorinated Cmpds.- passes test
Identification*	IR :2,3 MS :3,4,5 NMR :1,3	HNMR	IR

*References

- 1: Joint FAO/WHO Expert Committee on Food Additive (JECFA)
- 2: Food Chemicals Codex (FCC)
- 3: 有機化合物のスペクトルデータベース SDBS(独立行政法人産業技術総合研究所)
- 4: Wiley's Registry of Mass spectral Database
- 5: NIST/EPA/NIH Mass Spectral Library
- 6: Sigma-Aldrich