

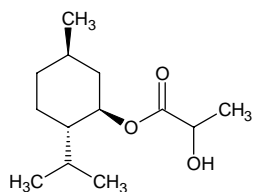
l-menthyl lactate

l-メントール ラクテート

Formula C₁₃H₂₄O₃

Mol. Wt. 228.33

CAS No. 59259-38-0



SEQ No. 1528 エステル類

FEMA No. 3748

JECFA No. 433

	JFFMA	JECFA	FCC
Chemical name	l-menthyl lactate	l-Menthyl lactate	
Content (NLT)	95.0 % (GC)	97 %	
Refractive index			
Specific gravity			
Acid value (NMT)	2.0	2.0	
Melting/Congeeing point	MP: 37 to 43°C	MP: 25°C	
Angular/Specific rotation	AR: -73 to -69° (α 20D)		
Heavy metals (NMT)			
Solubility in ethanol			
Other requirements			
Identification*	IR : 1,3 MS : NMR :	IR	

*References

- 1: Joint FAO/WHO Expert Committee on Food Additive (JECFA)
- 2: Food Chemicals Codex (FCC)
- 3: 有機化合物のスペクトルデータベース SDBS(独立行政法人産業技術総合研究所)
- 4: Wiley's Registry of Mass spectral Database
- 5: NIST/EPA/NIH Mass Spectral Library
- 6: Sigma-Aldrich