

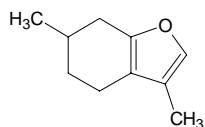
menthofuran

メントフラン

Formula C₁₀H₁₄O

Mol. Wt. 150.22

CAS No. 494-90-6



SEQ No. 1510 エーテル類

FEMA No. 3235

JECFA No. 758

	JFFMA	JECFA	FCC
Chemical name	menthofuran	Menthofuran	
Content (NLT)	95.0 % (GC)	99 %	
Refractive index	1.479-1.489 (n _{20D})	1.481-1.486 (n _{20D})	
Specific gravity	0.964-0.974 (d _{20/20})	0.960-0.970 (d _{25/25})	
Acid value (NMT)			
Melting/Congeealing point			
Angular/Specific rotation			
Heavy metals (NMT)			
Solubility in ethanol		miscible	
Other requirements			
Identification*	IR :1,5 MS :4,5 NMR :3	IR	

*References

- 1: Joint FAO/WHO Expert Committee on Food Additive (JECFA)
- 2: Food Chemicals Codex (FCC)
- 3: 有機化合物のスペクトルデータベース SDBS(独立行政法人産業技術総合研究所)
- 4: Wiley's Registry of Mass spectral Database
- 5: NIST/EPA/NIH Mass Spectral Library
- 6: Sigma-Aldrich