

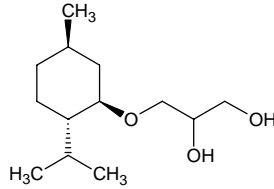
3-(l-menthoxy)-1,2-propanediol

3-(メントキシ)-1,2-プロパンジオール

Formula C₁₃H₂₆O₃

Mol. Wt. 230.34

CAS No. 207792-35-6



SEQ No. 1515 脂肪族高級アルコール類

FEMA No. 3784

JECFA No. 1408

	JFFMA	JECFA	FCC
Chemical name	3-(l-menthoxy)-1,2-propanediol	3-L-Menthoxopropane-1,2-diol	
Content (NLT)	98.0 % (GC)	99 %	
Refractive index	1.471-1.477 (n _{20D})	1.472-1.476 (n _{20D})	
Specific gravity	0.992-1.004 (d _{20/20})	0.989-0.999 (d _{25/25})	
Acid value (NMT)		1	
Melting/Congeealing point			
Angular/Specific rotation	AR: -86 to -80° (α _{20D})		
Heavy metals (NMT)			
Solubility in ethanol		Soluble	
Other requirements			
Identification*	IR : MS : NMR :1	NMR	

*References

- 1: Joint FAO/WHO Expert Committee on Food Additive (JECFA)
- 2: Food Chemicals Codex (FCC)
- 3: 有機化合物のスペクトルデータベース SDBS(独立行政法人産業技術総合研究所)
- 4: Wiley's Registry of Mass spectral Database
- 5: NIST/EPA/NIH Mass Spectral Library
- 6: Sigma-Aldrich