

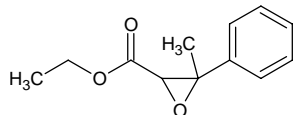
# ethyl beta-methyl-beta-phenylglycidate

## エチル β-メチル-β-フェニルグリシデート

Formula C<sub>12</sub>H<sub>14</sub>O<sub>3</sub>

Mol. Wt. 206.24

CAS No. 77-83-8



SEQ No. 853 エステル類

FEMA No. 2444

JECFA No. 1577

	JFFMA	JECFA	FCC
Chemical name	ethyl beta-methyl-beta-phenylglycidate	Ethyl methylphenylglycidate	Ethyl Methylphenylglycidate
Content (NLT)	95.0 % (GC)	98 %	98.0 % sum of two isomers /GC(M-1b)
Refractive index	1.502-1.513 (n <sub>20D</sub> )	1.504-1.513 (n <sub>20D</sub> )	1.504-1.513 (n <sub>20D</sub> )
Specific gravity	1.087-1.098 (d <sub>20/20</sub> )	1.086-1.096 (d <sub>25/25</sub> )	1.086-1.096 (d <sub>25/25</sub> )
Acid value (NMT)	2.0	2	2.0
Melting/Congeealing point			
Angular/Specific rotation			
Heavy metals (NMT)			
Solubility in ethanol		Soluble	1 mL in 3 mL 70% alc
Other requirements			
Identification*	IR : 1,2,5,6 MS : 4,5 NMR :	IR	IR

#### \*References

- 1: Joint FAO/WHO Expert Committee on Food Additive (JECFA)
- 2: Food Chemicals Codex (FCC)
- 3: 有機化合物のスペクトルデータベース SDBS(独立行政法人産業技術総合研究所)
- 4: Wiley's Registry of Mass spectral Database
- 5: NIST/EPA/NIH Mass Spectral Library
- 6: Sigma-Aldrich