

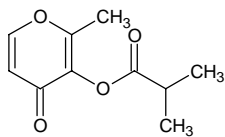
maltol isobutyrate

マルトール イソブチレート

Formula C₁₀H₁₂O₄

Mol. Wt. 196.20

CAS No. 65416-14-0



SEQ No. 1493 エステル類

FEMA No. 3462

JECFA No. 1482

	JFFMA	JECFA	FCC
Chemical name	maltol isobutyrate	Maltyl isobutyrate	Maltol Isobutyrate
Content (NLT)	97.0 % (GC)	96 %	96.0 % GC(M-1b)
Refractive index	1.493-1.499 (n _{20D})	1.497-1.501 (n _{20D})	1.493-1.501 (n _{20D})
Specific gravity	1.150-1.156 (d _{20/20})	1.145-1.149 (d _{25/25})	1.140-1.153 (d _{25/25})
Acid value (NMT)	5.0	10	10.0
Melting/Congeealing point			
Angular/Specific rotation			
Heavy metals (NMT)			
Solubility in ethanol		Soluble	1 mL in 1 mL 95% ethanol
Other requirements			
Identification*	IR : 1,2,6 MS : 4 NMR : 6	IR	IR

*References

- 1: Joint FAO/WHO Expert Committee on Food Additive (JECFA)
- 2: Food Chemicals Codex (FCC)
- 3: 有機化合物のスペクトルデータベース SDBS(独立行政法人産業技術総合研究所)
- 4: Wiley's Registry of Mass spectral Database
- 5: NIST/EPA/NIH Mass Spectral Library
- 6: Sigma-Aldrich