

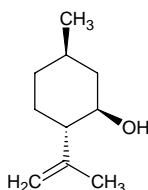
# l-isopulegol

## l-イソプレゴール

Formula C<sub>10</sub>H<sub>18</sub>O

Mol. Wt. 154.25

CAS No. 89-79-2



SEQ No. 1442 脂肪族高級アルコール類

FEMA No. 2962

JECFA No. 755

	JFFMA	JECFA	FCC
Chemical name	l-isopulegol	Isopulegol	Isopulegol
Content (NLT)	90.0 % (GC)	95 % total of isomers	95.0 % total alc. as C <sub>10</sub> H <sub>18</sub> O  /Chem(Appendix VI; 1.2 g/ 77.12 2h reflux)
Refractive index	1.467-1.477 (n <sub>20D</sub> )	1.468-1.477 (n <sub>20D</sub> )	1.470-1.475 (n <sub>20D</sub> )
Specific gravity	0.905-0.915 (d <sub>20/20</sub> )	0.904-0.913 (d <sub>25/25</sub> )	0.904-0.913 (d <sub>25/25</sub> )
Acid value (NMT)		1.0	1.0
Melting/Congeeing point			
Angular/Specific rotation	AR: -20.6 to -19.6° (α <sub>20D</sub> )		AR: -7 to 0°
Heavy metals (NMT)			
Solubility in ethanol		miscible	1 mL in 4 mL 60% alc gives clear soln
Other requirements			1.0% as citronellal (M-2d, 10 g/ 77.13)
Identification*	IR : 1,2,3,6 MS : 3,4,5 NMR : 3,6	IR	IR

### \*References

- 1: Joint FAO/WHO Expert Committee on Food Additive (JECFA)
- 2: Food Chemicals Codex (FCC)
- 3: 有機化合物のスペクトルデータベース SDBS(独立行政法人産業技術総合研究所)
- 4: Wiley's Registry of Mass spectral Database
- 5: NIST/EPA/NIH Mass Spectral Library
- 6: Sigma-Aldrich