

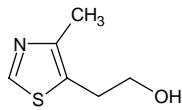
2-(4-methyl-5-thiazolyl)ethanol

2-(4-メチル-5-チアゾリル)エタノール

Formula C₆H₉NOS

Mol. Wt. 143.21

CAS No. 137-00-8



SEQ No. 2305 芳香族アルコール類

FEMA No. 3204

JECFA No. 1031

	JFFMA	JECFA	FCC
Chemical name	2-(4-methyl-5-thiazolyl)ethanol	4-Methyl-5-thiazoleethanol	4-Methyl-5-thiazole Ethanol
Content (NLT)	97.0 % (GC)	96 %	98.0 % GC(M-1b)
Refractive index	1.540-1.551 (n _{20D})	1.540-1.556 (n _{20D})	1.548-1.552 (n _{20D})
Specific gravity	1.195-1.216 (d _{20/20})	1.196-1.210 (d _{25/25})	1.196-1.210 (d _{25/25})
Acid value (NMT)		3.0	
Melting/Congeaing point			
Angular/Specific rotation			
Heavy metals (NMT)			
Solubility in ethanol		Miscible at room temperature	
Other requirements			
Identification*	IR : 2,3,6 MS : 3,4,5 NMR : 1,3,6	NMR	IR

*References

- 1: Joint FAO/WHO Expert Committee on Food Additive (JECFA)
- 2: Food Chemicals Codex (FCC)
- 3: 有機化合物のスペクトルデータベース SDBS(独立行政法人産業技術総合研究所)
- 4: Wiley's Registry of Mass spectral Database
- 5: NIST/EPA/NIH Mass Spectral Library
- 6: Sigma-Aldrich